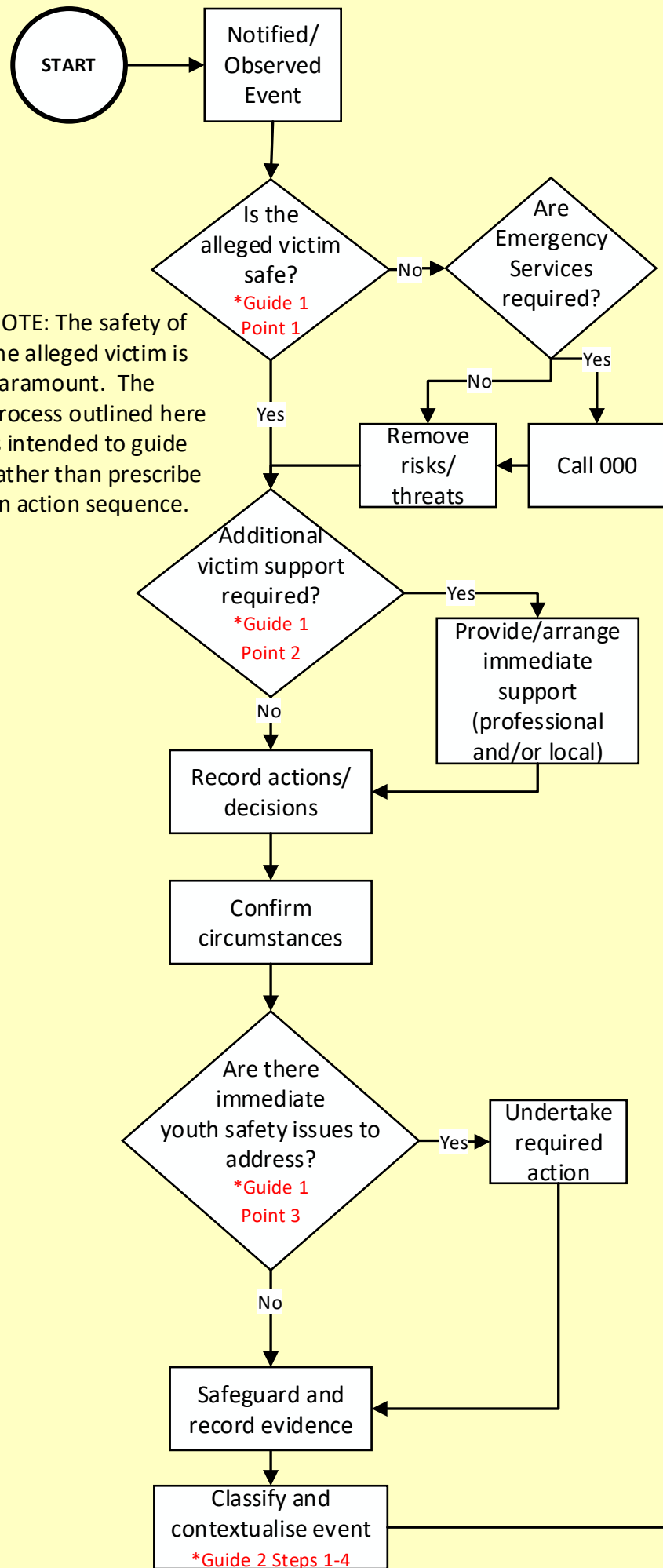


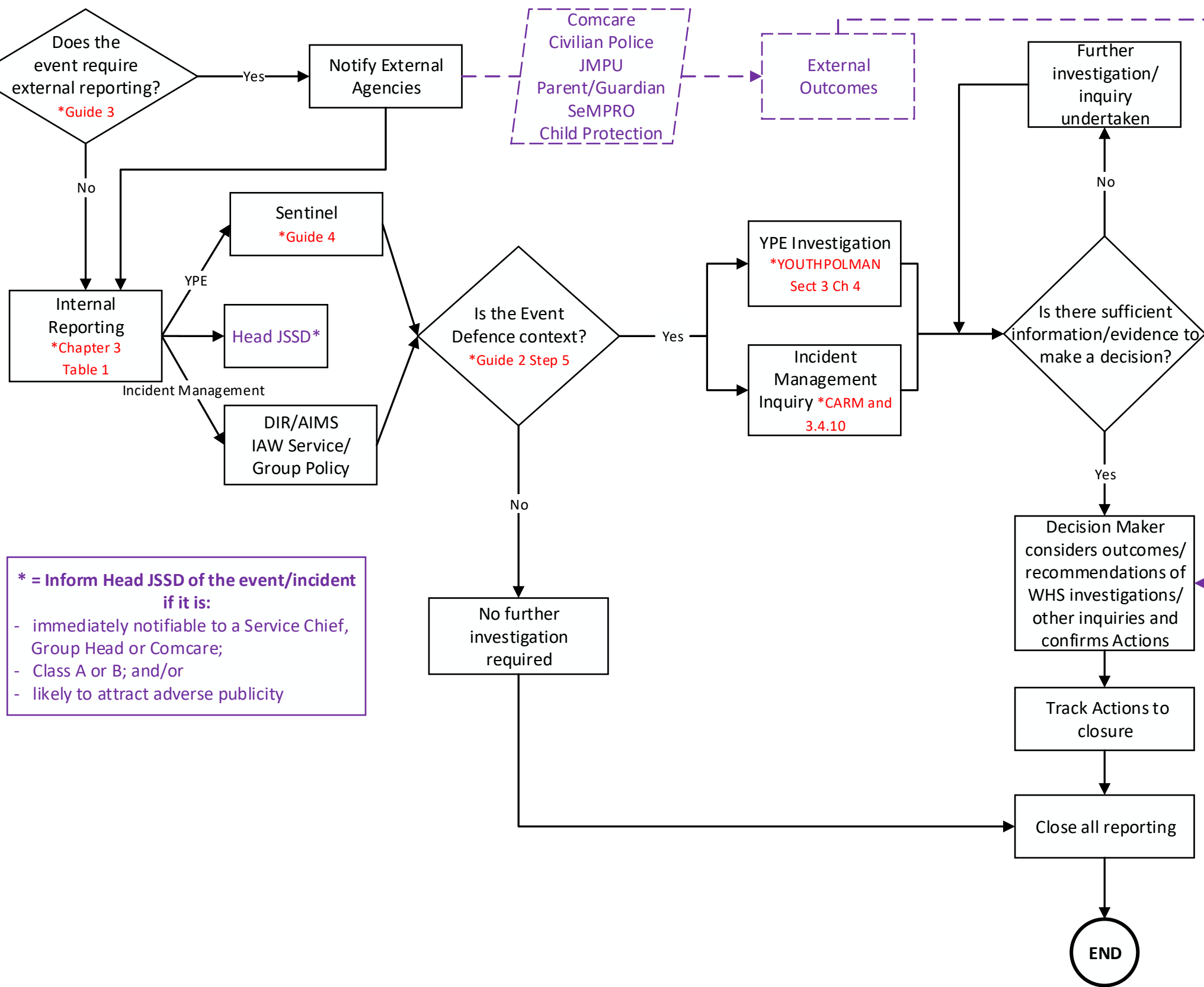
**IMMEDIATE RESPONSE
(GENERALLY WITHIN 30-60 MINUTES)**



NOTE: The safety of the alleged victim is paramount. The process outlined here is intended to guide rather than prescribe an action sequence.

Youth Protection Event/Incident Management Flowchart

This flowchart is intended to be used when managing a youth protection event/incident. A youth protection event/incident is defined as any event/incident of unacceptable behaviour/misconduct which adversely affected or had the potential to adversely affect the health, protection or wellbeing of a youth (refer 3.3.9).



*** = Inform Head JSSD of the event/incident if it is:**

- immediately notifiable to a Service Chief, Group Head or Comcare;
- Class A or B; and/or
- likely to attract adverse publicity

Comcare
Civilian Police
JMPU
Parent/Guardian
SeMPRO
Child Protection

External Outcomes